

Trinity International University  
Department of Campus Safety and Security Services



2020

Annual Security Report & Annual Fire Safety Report  
January 1, 2019 – December 31, 2019

Trinity International University  
2065 Half Day Road  
Bannockburn IL 60015  
Phone: 847-317-7126 | Fax: 847-317-8148  
Email: [security@tiu.edu](mailto:security@tiu.edu)

Trinity educates men and women to engage in God's redemptive work in the world by cultivating  
Academic Excellence, Christian Faithfulness, and Lifelong Learning.

Department of Campus Safety and Security Services  
SERVE . PROTECT . EDUCATE

**Mission Statement**

The mission of Campus Safety and Security Services is to faithfully serve and protect the Trinity community with care and compassion in collaboration with Facility Services and Student Life to promote individual responsibility and respect so that the goal of Christ centered academic excellence can be obtained.



## TABLE OF CONTENTS

Emergency Contact Information.....	4
Statement of Interagency Cooperation .....	6
Emergency Call Boxes.....	6
Timely Warnings .....	7
Emergency Response and Evacuation Notification.....	9
Shelter in Place-Campus Evacuation.....	11
Mandatory Reporting.....	12
Voluntary Confidential Reporting Policy .....	12
Access to Campus Facilities .....	13
Maintenance of Campus Facilities.....	13
Violence Prevention Policy .....	14
Campus Awareness and Education.....	14
Sexual Assault.....	18
Criminal and University Charges .....	19
Consent .....	21
Title IX Coordinator .....	23
Registered Sex Offenders .....	23
Missing Persons Policy .....	23
Tobacco, Drug and Alcohol Policy .....	28
Preparation of the Annual Crime Report .....	29
Annual Fire Safety Report .....	30
Procedures in Case of Fire .....	32
Annual Emergency Evacuation Drills .....	34
Fire Prevention Programs .....	34
Future Improvements .....	35
Fire Statistics.....	36
Fire Protection Systems.....	39
Clery Report Geography Classifications.....	40
Crime Definitions.....	40
Release of Clery Report Statistical Data.....	44
Clery Geography.....	52
Drug and Alcohol Abuse Policy.....	53

## Emergency Contact Information

All students, employees, and guests are encouraged to promptly report incidents of crime, suspicious activity and emergencies as noted below:

### **IMMEDIATE EMERGENCY ASSISTANCE:**

To contact civil authorities via campus phone.....9-911

To contact civil authorities from any non-campus phone.....911

### **LOCAL EMERGENCY NUMBERS - Always call Security after calling 911!**

To contact Trinity Safety and Security Services.....847-317-6400

From a campus phone.....x6400

Ambulance.....911

Fire.....911

Police.....911

Hazardous Spills.....847-814-1793

Utility Emergencies.....847-814-1793

Hazardous Spills.....847-814-1793

Poison Information.....800-942-5969

Rape/Sexual Assault Counseling Program.....847-872-7799

Counseling Center.....847-317-4067

Discrimination/Harassment.....847-317-7138

**Bannockburn Police Department**  
**Non-Emergency Number: 847-945-8490**

**Deerfield Bannockburn Fire Protection District**  
**Non-Emergency Number: 847-945-4066**

## Trinity Safety and Security

Dear Students, Faculty, Staff and Visitors:

The “Jeanne Clery Disclosure of Campus Security Policy and Campus Crime Statistics Act of 1998,” commonly referred to as the “Clery Act,” along with amendments from the “Violence Against Women Reauthorization Act of 2013 (VAWA) (Pub. Law 113-4)” requires institutions of higher education participating in programs authorized under Title IV of the Higher Education Act to report specified crime statistics on college campuses and to provide other safety and crime information to members of the campus community. The following Safety, Security, and Fire Report demonstrate the University’s commitment to a safe and secure learning environment. Safety and Security Services offers many programs and initiatives to assist in enhancing campus safety. They include:

- Emergency call boxes strategically located around campus
- Controlled and/or restricted access to residence halls and other campus buildings
- Safety escorts
- 24 hour a day patrol of campus buildings and grounds
- Close relationship with Facility Services to ensure proper lighting and safe conditions

The Bannockburn area is regarded as a very safe area to live and work. Even with this in mind, students and staff are encouraged to stay alert and take the necessary precautions to prevent criminal activity. This office works directly with Student Affairs to consistently evaluate and update policies that directly affect our students’ safety and learning experience.

Trinity welcomes you to this academic year and will gladly partner with you to address any concerns you may have as you pursue your occupational and educational goals.

Trinity Safety and Security  
Aron Forch 847-317-7126  
agforch@tiu.edu

## **Introduction**

The material in this Annual Security Report (ASR) and Annual Fire Safety Report (AFSR) provides critical information related to safety and security at the Trinity International University Bannockburn campus. All members of the University community are encouraged to read the ASR and AFSR. We hope that you will use the information to help foster a safe environment for yourself and others. But it is important to stress that safety is a shared responsibility.

## **Statement of Interagency Cooperation**

Safety and Security Services has a No Arrest-No Detainment Policy. Officers are required to observe and report any criminal or suspicious behavior to the Bannockburn Police Department. Safety and Security Services works closely with the Bannockburn Police Department and the Deerfield-Bannockburn Fire Protection District to enhance the safety and security of the entire campus. Bannockburn Police are encouraged to, and frequently patrol the campus. The Manager meets regularly with the Police Chief and the Fire Marshall to discuss strategies and action plans for safe and efficient response to the University. The Bannockburn Police station is located 1.5 miles from campus and the fire station is located adjacent to campus. This close proximity further facilitates a quick response to our campus.

Additionally, through coordinated effort with local law enforcement, though Trinity does not have any off campus housing facilities, any criminal activity engaged in by students at off-campus locations is monitored and recorded. This information is provided to Security and Student Life for any action or follow-up that may be required.

## **Emergency Call Boxes**

The University has four emergency call boxes located on campus. When the call box is activated it contacts the security officer on duty who can give immediate assistance.

The call boxes are located in the following areas;

- Rodine parking lot
- Southwest corner of the Waybright center
- Northeast corner of the Roling Library

- North side of the McLennan parking lot

## **Crime Reporting**

The University relies on every community member to contribute to safety and security on campus by reporting crime and suspicious activities in a timely manner, and by using common sense when going about daily activities. In addition to the above listed Emergency Call Boxes, employees and students can report crimes in the following ways:

- 911 from a cell phone
- Campus phones (x6400) or (9-911)
- Campus Security 847-317-6400
- Student Life 847-317-7034
- Human Resources 847-317-7189

## **Timely Warnings**

Trinity issues timely warnings when it determines that an incident from the Clery crime category presents a serious or ongoing threat to students and employees from either on or off campus. These crimes include:

- Criminal homicide (murder and non-negligent manslaughter)
- Negligent manslaughter
- Sex offenses — includes rape, fondling, incest, and statutory rape
- Robbery
- Aggravated assault
- Burglary
- Motor vehicle theft
- Domestic Violence
- Dating Violence
- Stalking
- Arson

Hate crimes that also include:

- Larceny/Theft
- Simple Assault
- Intimidation
- Destruction/Damage/Vandalism of Property

Timely Warnings will be issued with information that promotes safety and provides guidance to individuals to protect themselves from a serious or continuing threat to the campus population in a manner that is timely and will aid in the prevention of similar crimes. A Timely Warning will be sent, unless issuing a notification will, in the professional judgment of those responsible, compromise efforts to assist victims or contain, respond to, or otherwise mitigate the emergency.

In compliance with the Clery Act, the following criteria will be evaluated to determine if a Timely Warning will be issued:

- Has the incident been reported to the TIU Security or a required reporting party?
- Has the crime or incident been identified as a Clery Act crime?
- Is the crime or incident considered to represent a serious or continuing threat to students, faculty, staff, or campus visitors?

The Timely Warning will be determined by the following individuals:

- Safety and Security Manager, or his designee
- Director of Communications
- Any member of the University Leadership Team

This group will then communicate and confirm if there is an emergency or dangerous situation that poses an immediate threat to the health or safety of some or all members of the TIU Community. Timely Warning will be sent by any or all of the following means as deemed necessary:

- Trinity Emergency Alert (cell phone text and voice messages)
- Communication through the University telephone speakers
- University email system
- Social media outlets
- Outdoor loud speaker system
- Trinity web site <http://www.tiu.edu/alerts/>

These alert systems will be tested and evaluated twice a year. Past Timely Warnings can be viewed at <http://www.tiu.edu/about/consumer-information/campus-safety/timely-warnings/>



## **Emergency Response and Evacuation Notification**

The Clery Act requires every qualifying institution, without exception, to have and disclose emergency response and evacuation procedures in response to a significant emergency or dangerous situation involving an immediate threat to the health or safety of students or employees occurring on the campus. In the event a situation arises on or near campus the:

- Safety and Security Manager, or his designee,
- Director of Communications
- Any member of the University Leadership Team

Will communicate and confirm that there is an emergency or dangerous situation that poses an immediate threat to the health or safety of some or all members of the TIU Community and issue the appropriate warning and critical information that will promote the safety and wellbeing of students and staff without delay, unless issuing a notification will, in the professional judgment of responsible authorities, compromise efforts to assist a victim or to contain, respond to, or otherwise mitigate the emergency by one or all of the following means:

- TIU Emergency Alert (cell phone text and voice messages)
- Communication through the University telephone speakers
- University email system
- Social media outlets
- Outdoor loud speaker system

Examples that may require an emergency notification include the following:

- Approaching severe or extreme weather
- Gas leak
- Fire
- Terrorist incident
- Armed intruder
- Bomb threat
- Civil unrest or rioting
- Explosion

Anyone with information related to an emergency or dangerous situation which would warrant a timely warning or emergency notification should report that information to:

- Safety and Security Services at 847-317-6400 or x6400 from a campus phone.
- Student Life 847-317-7070
- Human Resources 847-317-7189

In any emergency, it is always appropriate to contact local emergency services by phoning 911. TIU conducts annual evacuation drills to prepare building occupants for an organized evacuation in case of an emergency. At TIU, evacuation drills are used as a way to educate and train occupants on issues specific to their building. During the drill, occupants 'practice' drill procedures and familiarize themselves with the location of exits and the sound of the fire alarm. Placards located in each room have educational information as well as exact evacuation procedures for your area. These procedures are located in the Trinity Emergency Action Plan and can be accessed in the quick links section of MyTIU. In addition to educating the occupants of each building about the evacuation procedures, the process also provides the University an opportunity to test the operation of fire alarm system components. Evacuation drills are monitored by the DBFD and Security Services to evaluate egress and behavioral patterns. After Action Reports are prepared by the Safety and Security Manager which identify deficient equipment so that repairs can be made immediately.

Recommendations for improvements are also submitted to the appropriate departments/offices for consideration. Students receive information about evacuation, lock-down and shelter-in-place procedures during their first floor meetings and during other educational sessions that they can participate in throughout the year. The Residence Life Staff members are trained in these procedures as well and act as an on-going resource for the students living in residential facilities. Security Services coordinates announced and unannounced evacuation drills each semester, as described above, to test the emergency response and evacuation procedures, and to assess and evaluate the emergency evacuation plans and capabilities. TIU will publicize a summary of its emergency response and evacuation procedures in conjunction with at least one drill or exercise each calendar year. These procedures will be documented in an After Action Report describing the exercise, date, time and whether it was announced or unannounced. This report is available upon request. (see appendix A)

## **Shelter-in-Place Procedures**

If an incident occurs and the buildings or areas around you become unstable, or if the air outdoors becomes dangerous due to toxic or irritating substances, it is usually safer to stay indoors, because leaving the area may expose you to that danger. Thus, to "shelter-in-place" means to make a shelter of the building that you are in, and with a few adjustments this location can be made even safer and more comfortable until it is safe to go outside.

## **Campus Evacuation**

Should it become necessary to evacuate the entire campus, the decision to implement these procedures rests with the Vice President for Student Life. In situations requiring immediate action, the Bannockburn Police or Fire Department also can order a campus evacuation. When evaluating a possible evacuation, consideration will be given to the following:

- Specific threat – Bomb, fire, storm, earthquake, explosion, hazardous materials incident
- Context – Time of day, likelihood
- Recommendations of the public safety officials
- In all cases when the decision has been made to evacuate the following basic procedures will be used.
  1. The campus will be evacuated in stages, beginning with the areas that are in the immediate vicinity of the threat.
  2. Other areas may then be evacuated, depending on the nature of the threat.
  3. A gradual evacuation is preferable to a total, immediate evacuation, if possible, as it triages the populations most in danger, minimizes the likelihood of gridlock and congestion, and provides for ingress of emergency vehicles and personnel.
  4. In all cases, evacuees would be directed away from the vicinity of the threat

Agreements are in place with High School District 113 to provide bus transportation for a campus evacuation. Additional details are included in the TIU Emergency Operations Plan.

## Mandatory Reporting

Some employees, by nature of their positions, are required to report any instances of criminal activity that they become aware of. At Trinity, we refer to these employees as "mandatory reporters." These University faculty and staff members have "significant responsibility" for students and campus activities and are required to properly report crimes to Security for possible Timely Warnings and to be included in the Annual Security Report.

*All University community members that are considered Campus Security Authorities are required to immediately report the following situations to an appropriate individual in authority including but not limited to, Resident Life Staff, Dean of Student's Office, and Coaches:*

- Any listed Clery Act crime.
- Any situation judged to present a serious or ongoing threat to students and employees

## Voluntary Confidential Reporting Policy

The purpose of this policy is to ensure that guidelines and expectations are in place regarding the anonymous reporting of crimes. If you are the victim of a crime and do not want to pursue action within the University System or the criminal justice system, you may still want to consider making a confidential report. With your permission, the following **Confidential Advocates** can file a report on the details of the incident without revealing your identity:

- Campus "**Professional Counselors**" 847-317-4067

or by filling out a confidential online form at:

[http://tiu\\_forms.formstack.com/forms/assault\\_report](http://tiu_forms.formstack.com/forms/assault_report). The purpose of a confidential report is to comply with your wish to keep the matter confidential, while taking steps to ensure the future safety of yourself and others. With such information, the University can keep an accurate record of the number of incidents involving students, determine where there is a pattern of crime with regard to a particular location, method, or assailant, and alert the campus community to potential danger. Reports filed in this manner are counted and disclosed in the annual crimes statistics for the institution. Acts of sexual violence or harassment may be shared with **Confidential Resources; who by law, must maintain complete confidentiality and may not disclose the details** of an incident.

When acting as such, the above Counselors are not considered to be a campus security authority and are not required to report crimes for inclusion into the annual disclosure of crime statistics. As a matter of policy, they are encouraged; if and when they deem it appropriate, to inform persons being counseled of the procedures to report crimes on a voluntary basis for inclusion into the annual crime statistics.

**Confidential Advisors-** Susan Corapi serves as TIU's confidential advisor and can be reached at 847-317-4170. There are also confidential advisors available off-campus through the Zacharias Sexual Abuse Center by dialing their 24 hour hotline at 847-872-7799. This State of Illinois requirement can provide you with assistance in working through a sexual assault. All communications between a confidential advisor and a survivor pertaining to an incident of sexual violence shall remain confidential, unless the survivor consents to the disclosure of the communication in writing.

### **Access to Campus Facilities**

The University encourages an open campus environment with limited constraints. Access to campus buildings and grounds is a privilege extended to students, faculty, staff and guests. Most campus facilities are open during normal business hours. All buildings are cleared and locked on a daily schedule by Trinity security. All exterior doors to University dorms are to be kept locked 24 hours a day; the university enforces a two locked door policy. Standard visiting hours are Wednesdays 5:00 pm - 10:30 pm, Saturdays 5:00 pm - 11:00 pm and Sundays 3:00 pm - 11:00 pm. Student conduct is expected to be above reproach. At all other times access to residential areas of these dorms requires a key. During extended breaks, the doors to all halls will be equipped with a lock different from the regular lock/key issued to resident students. Individuals who wish to access University buildings during non-business hours should contact the appropriate department administrator or Trinity Security. Visitors to campus are required to check in with Security at the main guard house located at the Route 22 entrance.

### **Maintenance of Campus Facilities**

Trinity International University's Facilities Services department is committed to campus safety and security. Maintenance and Grounds

Departments regularly conduct surveys of the campus property to ensure adequate lighting, the landscape is appropriately controlled, and street and pathways are kept clear in the winter months. Residents, faculty and staff are encouraged to create work orders for any deficiencies they discover at <http://fixit.tiu.edu/WebRequest/> . Repairs are addressed in the following manner; emergency work orders are addressed immediately & personnel are called in if necessary. Urgent work orders are addressed by the end of the business day.

## **Violence Prevention Policy**

The Trinity community is committed to the prevention of violence, harassment, bullying, and intimidating behavior. Except for sworn police officers, weapons of all types are banned from campus. In compliance with the Illinois Firearm Concealed Carry Act (the “Act”) (430 ILCS 66/1 et seq.) Trinity maintains a weapons and firearms-free Campus. It is illegal to bring or possess ANY firearm on any Illinois school, college or university campus. Firearm restrictions include but are not limited to any air powered gun, including paint ball gun, BB gun, pellet gun or any toy that resembles a gun. In addition to firearms, swords, knives, and explosives of any kind including fireworks are banned from campus. Any violation of this policy should be reported to Trinity Security or the Bannockburn Police Department.

## **Campus Awareness and Education Programs**

All new TIU students are required to complete an online course from 3<sup>rd</sup> Millennium covering drug and alcohol abuse, sexual assault, consent and bystander intervention. Residence Life Teams are instructed in the areas of crime, sexual violence (assault, dating violence, domestic violence and stalking) sexual harassment prevention, crime prevention, drug and alcohol abuse and prevention and security procedures at the beginning of, and as needed through the academic year. As required by the Clery Act, Trinity International University conducts initial, ongoing and awareness programs for employees and the student body as highlighted below:

- 1. Sexual Harassment/ Sexual Violence**
- 2. Campus Security programs**
- 3. Crime Prevention programs**
- 4. Drug and Alcohol Abuse Prevention Programs**
- 5. Fire Safety Education Programs**

**6. Online training on alcohol prevention through 3rd Millennium for all incoming freshman and transfer students.**

These programs are identified by type and frequency in the appropriate policy and are evaluated bi-annually and updated as needed by Student Life and Human Resources. They include:

- Mandatory orientation sessions for new students at the beginning of each semester, and at the beginning of employment for new staff. These are designed to educate and prevent outlined behaviors.
- Ongoing prevention and awareness campaigns for new students, as well as reminders of the policy for current students and employees throughout the year.
- Residence Life workshops on an annual basis.
- Professional residence life training annually to respond and assist students in crisis situations and in protocols for emergency response.
- Flyers and other educational documents are posted yearly in prominent locations on campus.
- Workshops led by Counseling Center are available to all students and employees and include topics such as healing from sexual abuse, anxiety, self-esteem, body image and others.

During NSO (new student orientation) in August students are informed of services offered by Security Services. Power point presentations outline ways to maintain personal safety and residence hall security. Students are told about crime on-campus and in the surrounding towns. Similar information is presented to new employees. Crime prevention awareness programs and sexual assault prevention programs are offered periodically during the academic year. Security Services, in cooperation with other university organizations and departments, present crime prevention awareness sessions on sexual assault (rape and acquaintance rape), theft, and vandalism, as well as educational sessions on personal safety and residence hall security.

A common theme of all awareness and crime prevention programs is to encourage students and employees to be aware of their responsibility for their own security and the security of others. In addition to seminars, information is disseminated to students and employees through Crime and Fire Prevention Awareness Day, security alerts, displays, and articles. When time is of the essence, information is released to the university community through security alerts using the TIU Emergency Alert System.

You are automatically enrolled in the TIU Emergency Alert System when you register for classes or during your employment process.

### University programs to inform students and employee's about campus security procedures

Program Name	Target Audience	Topic	Annual Frequency
Parent Welcome Program	Parents of incoming Students	Safety and Security Overview	2
New Student Orientation	New Students	Crime prevention and personal safety	2
Shots Fired on Campus	Students, Faculty and Staff	Active Shooter Video presentation	Ongoing year round
Crime prevention and reporting	Resident Directors Resident Assistance	Orientation Training	1
International student's safety program	New international students	Crime prevention and personal safety	2
New employee orientation	New employees	Crime prevention and personal safety	1
Electronic Device Registration	Students, Faculty and Staff	Database for tracking lost or stolen electronic devices	Ongoing year round

## Bystander Intervention

Bystander Intervention is a philosophy and strategy for prevention of various types of violence, including bullying, sexual harassment, sexual assault, and intimate partner violence. The goals of bystander intervention are to:

- Raise awareness of helping behaviors
- Increase motivation to help
- Develop skills and confidence when responding to problems or concerns
- Ensure the safety and well-being of self and others



Trinity encourages its students, faculty, and staff to take an active role to prevent sexual violence in a safe and positive way. Suggestions to assist you include:

- Be aware of comments and behaviors from others that would indicate they were intent on having sexual intercourse even if the partner was unwilling.
- Notice if someone is getting ready to have sexual intercourse with a partner who is incapacitated.
- Don't joke about sexual assault; comments and jokes that are meant to "ease the tension" or are "just kidding around" can trivialize the severity of the behavior.

This and additional information can be found at The Step UP! Program that was developed by the University of Arizona @ <http://stepupprogram.org/topics/sexual-assault/>

## **Risk Reduction**

While you can never completely protect yourself from sexual assault/violence, there are some things you can do to help reduce your risk of being assaulted in social situations.

- When you go to a social gathering, go with a group of friends. Arrive together, check in with each other throughout the evening, and leave together. Knowing where you are and who is around you may help you to find a way out of a bad situation.
- Trust your instincts. If you feel unsafe in any situation, go with your gut. If you see something suspicious, contact law enforcement immediately.
- Don't leave your drink unattended while talking, dancing, using the restroom, or making a phone call. If you've left your drink alone, just get a new one.
- Don't accept drinks from people you don't know or trust. At parties, don't drink from the punch bowls or other large, common open containers.
- Watch out for your friends, and vice versa. If a friend seems out of it, is way too intoxicated for the amount of alcohol they've had, or is acting out of character, get him or her to a safe place immediately.

## Sexual Assault

Trinity International University strictly prohibits the crimes of sexual assault, domestic violence, dating violence and stalking. This Policy will be widely distributed on campus so that all students, faculty, and staff at the beginning of each academic year. The most current version of this Policy can be found online at:

[https://my.tiu.edu/ICS/Administrative\\_Resources/University\\_Policies.jnz](https://my.tiu.edu/ICS/Administrative_Resources/University_Policies.jnz)

### What is Sexual Assault?

Sexual Assault is any kind of sexually offensive act against another person, any verbally offensive demand or suggestion, and any intentional touching of another person's body without mutual consent. Trinity strictly prohibits the crimes of dating violence, domestic violence, sexual assault, and stalking. The university defines these acts as including, but not limited to, the following:

- Rape/sexual assault (gang, acquaintance, stranger)
  - The FBI UCR definition of rape is: *“Penetration, no matter how slight, of the vagina or anus with any body part or object, or oral penetration by a sex organ of another person, without the consent of the victim.”*
- Acts on a person who is not conscious or able to give consent
- Indecent exposure
- Direct or indirect threats linked to sexual propositions or activity
- Coerced sexual activity
- Sexual propositions
- Sexual battery, the unwanted touching of an intimate part of another person, such as a sex organ, buttocks, or breasts.
- Use of intoxicants, including alcohol, which impair the victim's ability to give consent

## Sexual Assault Policy

If you are sexually assaulted go to a safe place. Any student or employee who is aware of a sexual assault is encouraged to immediately contact Campus Safety and Security and / or a Campus Security Authority. Whether or not a sexual assault survivor decides to report an incident to the police,

the survivor is encouraged to immediately seek medical treatment and access counseling resources.

Call the Bannockburn Police at 911 or 847.945.8636. Reporting of a sexual assault is imperative for both the apprehension of the offender and for the collection of evidence that is vital to the support of the complaint. Even if you choose not to file charges or the rape occurred out of the area, the police should be notified to take a report and provide you with the proper medical treatment and counseling that you deserve. A female police officer, if not present, is always available and can be requested to take the report.

As soon as a student or employee reports that they are a victim of dating violence, domestic violence, sexual assault or stalking, whether the crime occurred on campus or not, Trinity will provide the student or employee a written explanation of the students or employee's rights, options and assistance.

It is important that a victim of sexual assault not bathe, douche, smoke, change clothing or clean the bed/linen/area where they were assaulted if the offense occurred within the past 96 hours so that evidence may be preserved that may assist in proving that the alleged criminal offense occurred/or is occurring or may be helpful in obtaining a protection order. After an incident of sexual assault and domestic violence, the victim should consider seeking medical attention as soon as possible at the closest hospital/health facility or via Zacharias Sexual Abuse Center by dialing their 24 hour hotline at 847-872-7799 (the center will also send an advocate to the hospital). In Illinois, evidence may be collected by trained SANE nurses (Sexual Assault Nurse Examiners) at one of our local hospitals, even if you chose not to make a report to law enforcement. Call a support person-a trusted friend or family member. Do not try to go through this alone. Do not blame yourself. Contact Trinity Security Services (x6400), or the Lake County Rape Crisis Hotline (847.872.7799). Victims of Domestic Violence can also consider contacting A Safe Place Hotline at (847) 249-4450. A more detailed description of this policy is located in the student handbook.

### **Criminal and University Charges**

A victim has the option of bringing criminal and/or university charges or neither against his or her assailant.

In terms of criminal charges, sexual assault is a crime that is prosecuted by the state. The Bannockburn Police or the Dean of Students can assist you in contacting the proper officials to arrange for legal representation.

The student considering formal charges against another student should talk initially to the Dean of Students, their Residence Life Staff, or any Counselor in the Counseling Center (847-317-4067), to learn about procedures and options.

The victim is entitled to be accompanied by a current member of the Trinity community — student, faculty, staff member, or administrator — who can provide emotional support during initial disciplinary hearings.

- Accuser and accused are entitled to the same opportunities: to have others present during the disciplinary proceeding
- Both accuser and the accused will be informed of the outcome of any institutional disciplinary proceeding brought about from an alleged sex offense. (This does not constitute a violation of FERPA.)

For the purpose of this policy, the outcome of a disciplinary proceeding means only the institution's final determination with respect to the alleged sex offense and any sanction that is imposed against the accused.

- Imposed sanctions ranging from a warning to permanent separation from the University following a final determination of an institutional disciplinary proceeding regarding sexual violence (assault, dating violence, domestic violence and stalking) rape, acquaintance rape, or other forcible or non-forcible sex offenses.

### **The University's Commitment**

In cases of sexual assault, a victim may fear being blamed for the occurrence. He or she may also fear the thought of public scandal or casual dismissal of the complaint. This is not the case. Trinity's commitment is to provide the following accommodations or protective measures whether the victim chooses to report the crime to local law enforcement or not:

- No prejudice or blame
- Meet privately with the victim, at a place of their choice, to take a complaint report and maintain confidentiality if the victim desires.
- Not to release the victim's name to the public or press

- Treat the victim with sensitivity, dignity, understanding, and professionalism
- Take the case seriously, regardless of your sex or the sex of the accused
- Accommodate a request to speak with a female or male staff member
- Assist in arranging for hospital treatment or other medical needs and in contacting counseling and safety resources
- Investigate the case fully and help to achieve the best outcome, which may involve the arrest and prosecution of the suspect
- Keep the victim informed on the progress of the investigation or prosecution
- Assist the victim in changing their academic and living situation upon request, if the change is reasonably available
- Assist the victim with transportation and working situations.
- Assist the victim in obtaining proper protective measures such as “no contact” or “restraining” orders.
- Be available to answer questions, explain legal procedures, or just listen
- Pray for the victim and for a positive result to this difficult situation

## **Consent**

Consent is an explicit, informed, voluntary, and mutually understandable communication to willingly participate in specific sexual activity without pressure, threats, coercion, force, or intimidation. Either person must also be able to withdraw consent and cease any sexual activity at any time. A current relationship, having previous sexual encounters, or silence from the individual may not be taken as an indication of consent. Similarly, a passive response or sexual advances that are not resisted physically or verbally do not constitute consent. Someone who is not of legal age, has a mental disorder, or is physically or mentally incapacitated may not give consent. The use of alcohol or drugs may render an individual incapable of giving consent due to impaired judgment and the inability to make decisions or communicate intentions. Consent may not be given by someone who is unconscious or unaware, or for any reason is unable to communicate her/his intention.

**State of Illinois definition of Consent** is defined in the State of Illinois, 720 ILCS 5/11-1.70, *as a freely given agreement to the act of sexual penetration or sexual conduct in question. Lack of verbal or physical resistance or*

*submission by the victim resulting from the use of force or threat of force by the accused shall not constitute consent.*

*The manner of dress of the victim at the time of the offense shall not constitute consent. (a) It shall be a defense under subsection (b) and subsection (c) of Section 11-1.50 and subsection (d) of Section 11-1.60 of this Code that the accused reasonably believed the person to be 17 years of age or over. The age for consent in Illinois is 17 years old. (b) A person who initially consents to sexual penetration or sexual conduct is not deemed to have consented to any sexual penetration or sexual conduct that occurs after he or she withdraws consent during the course of that sexual penetration or sexual conduct.*

### **Applicable Illinois State Law**

- Definition of “Consent,” 720 ILCS 5/11-1.70
- Illinois Domestic Violence Act of 1986 750 ILCS 60
- Criminal Sexual Assault (720 ILCS 5/11-1.20)

### **Illinois Stalking Statutes**

- Aggravated Stalking, 720 ILCS 5/12-7.4
- Cyberstalking 720 ILCS 5/12
- Stalking 720 ILCS 5/12-7.3

### **Sexual Harassment**

The Trinity community will not tolerate any form of sexual harassment from its Faculty, Staff, Students or Visitors. Sexual harassment includes unwelcome sexual advances, requests for sexual favors, and other verbal, physical, electronic or digital conduct or communication of a sexual or gender-based nature, when submission to or rejection of the conduct explicitly or implicitly affects a person’s employment or education, unreasonably interferes with a person’s work or educational performance, or creates an intimidating, hostile or offensive working, learning, or living environment.

## **Title IX Coordinator**

All educational institutions receiving Federal financial assistance must designate at least one employee to coordinate their efforts to comply with and carry out their responsibilities under Title IX of the Education Amendments of 1972, which prohibits sex discrimination in education programs and activities. Sexual misconduct against students, including sexual harassment, sexual assault, rape, and sexual exploitation, can be a form of sex discrimination under Title IX. The Title IX coordinator oversees Trinity's response to reports and complaints that involve possible sex discrimination to monitor outcomes, identify and address any patterns, and assess effects on the campus climate, so Trinity can address issues that affect the wider school community. The Trinity Title IX coordinator can be reached at 847-317-7138

## **Registered Sex Offenders**

Information concerning registered sex offenders living, working, or attending school in the village of Bannockburn may be obtained from the Lake County Police Department.

<http://www.homefacts.com/offenders/Illinois/Lake-County/Bannockburn.html>

## **Missing Persons Policy**

As mandated by the Higher Education Opportunity Act, Trinity International University is required to establish a missing student notification policy for students who reside in on-campus housing.

## **Contact Information**

1. All students who reside in on-campus housing have:
  - The option to identify an emergency contact that the University can contact within 24 hours after the time the student is determined missing according to the University's official notification procedures;
  - A way to register confidential contact information in the event the student is determined to be missing for more than 24 hours. Only authorized school personnel and law enforcement officials will have access to this information.

2. In the event a person is determined to be missing, the University must:
  - For students less than 18 years of age, notify a custodial parent or guardian no later than 24 hours after the time the student is determined to be missing according to the University's official procedures;
  - Initiate the emergency contact procedures designated by the student if Campus Security and Law Enforcement personnel have been notified and have determined that the student has been missing for more than 24 hours and has not returned to campus.

### **Communication of Procedures to Students**

1. Dormitory - at the beginning of each semester during mandatory floor meetings, Resident Life staff will inform students of the Missing Person Policy and provide students with the opportunity to identify contacts in the event that they are missing on the Confidential Contact Info Sheet. The Confidential Contact Info Sheet will be kept by Student Life for the duration of the academic year and will be shredded after one year, when the student moves out of on-campus housing, or when a new Confidential Contact Info Sheet is filled out.
2. Apartments - when a student moves in to on-campus apartments, the Housing Office will notify the student of the Missing Person Policy and have the student fill out a Confidential Contact Info Sheet. The Confidential Contact Info Sheet will be kept for the duration of the academic year and will be shredded when the student moves out of on-campus apartments.

### **Procedures for Reporting and Determination of a Missing Student Living in a Dormitory**

1. Procedures for Determining if a Student is Missing - when a student is suspected to be missing, it must be reported to a member of the Residence Life staff. Staff will record the reporting person's name, relationship to the missing student, and contact information where the reporting person can be reached on the Missing Person Report. The Missing Person Checklist (P-910 Form-A) should be used as the reference point for any future procedures and communications.



2. When a student is suspected to be missing:
  - a. It must be reported to a member of the Residence Life staff. Staff will record the reporting person's name, relationship to the missing student, and contact information where the reporting person can be reached on the Missing Person Report. Residence Life Staff will inform the Associate Dean of Students and the Safety and Security Manager about the missing person.
  - b. The Residence Life Staff will refer to the Missing Student Checklist and contact the reporting student for further information. If the Residence Life Staff determines at any point that there is credible threat to the well-being of the student reported as missing, the Residence Life Staff should call the Campus Safety and Security Officer on duty and request law enforcement assistance.
  - c. The Residence Life Staff should proceed to contact known friends and relations of the student reported missing, beginning with roommates and suitemates. All direct and indirect methods of reaching the missing student should be exhausted. The purpose at this point is to determine if the student is truly missing or has simply failed to make the desired contact with the reporting person.
3. If the student is located or is determined not to be missing, the missing student will be urged to make contact with the reporting person immediately. The Residence Life Staff will also contact the reporting person and relay that the student is not missing and has been asked to contact the reporting person.
4. If pursuing known contacts has not yielded confirmation of the student's whereabouts the Residence Life Staff should contact the Associate Dean of Students, report all obtained information and follow verbal notification with a written Incident Report. The Associate Dean of Students may then authorize the following measures to determine any activity of the student reported missing:
  - Mailbox activity;
  - Class attendance;
  - In-plain-sight examination of room for signs of recent use or planned departure.

5. If the results of these measures suggest that the student is indeed missing and unaccounted for the Associate Dean of Students will immediately notify the Campus Safety and Security Officer on duty who will then request law enforcement investigation. All information obtained about the missing student through Residence Life investigation will be shared with Campus Safety and Security and law enforcement representatives. The Associate Dean of Students is responsible for notification of the missing student's identified contact if the student has been missing for more than 24 hours. If the student is under 18 years of age, and not an emancipated individual, the Associate Dean of Students will immediately contact the custodial parent or guardian.

### **Procedures for Reporting and Determination of a Missing Student Living in an Apartment**

1. When a student is suspected to be missing, it must be reported to Campus Safety and Security. Resident Life staff will record the reporting person's name, relationship to the missing student, and contact information where the reporting person can be reached on the Missing Person Report. Resident Life staff will then inform the Dean of Students.
2. Resident Life will refer to the Missing Student Checklist and contact the reporting student for further information. If the Resident Life staff determines at any point that there is a credible threat to the well-being of the student reported as missing, the Housing Office staff will call the Bannockburn Police and request law enforcement assistance.
3. Resident Life should proceed to contact known friends and relations of the student reported missing, beginning with apartment neighbors. All direct and indirect methods of reaching the missing student should be exhausted. The purpose at this point is to determine if the student is truly missing or has simply failed to make the desired contact with the reporting person.
4. If the student is located or is determined not to be missing, the missing student will be urged to make contact with the reporting person immediately. Resident Life will also contact the reporting person and

relay that the student is not missing and has been asked to contact the reporting person.

5. If pursuing known contacts has not yielded confirmation of the student's whereabouts, Resident Life will contact the Associate Dean of Students, report all obtained information and follow verbal notification with a written Incident Report. The Associate Dean of Students will then authorize the following measures to determine any activity of the student reported missing:
  - Mailbox activity;
  - Class attendance;
  - In-plain-sight examination of room to see signs of recent use or planned departure.
6. If the results of these measures suggest that the student is indeed missing and unaccounted for, the Associate Dean of Students will immediately notify Bannockburn Police and request a law enforcement investigation. All information obtained about the missing student through the Resident Life investigation will be shared with Campus Safety and Security and law enforcement representatives. The Associate Dean of Students is responsible for notification of the missing student's identified contact if the student has been missing for more than 24 hours. If the student is under 18 years of age, and not an emancipated individual, the Associate Dean of Students will immediately contact the custodial parent or guardian.

### **Procedures for Notification of a Missing Student Living in a Dormitory or Apartment**

1. If the Associate Dean of Students determines that a student for whom a Missing Person Report has been filed has been missing for more than 24 hours, then within the next 24 hours, they must:
  - a. Notify the Bannockburn Police Department
  - b. Notify the individual identified by the student to be contacted in this circumstance;
  - c. If the student is under 18 years old, and not an emancipated individual, notify a parent or guardian;
  - d. Notify the Dean of Students.

2. Notify Campus Safety and Security
3. In the event that a Missing Person Report is filed directly with a Campus Safety and Security Officer, the officer will notify the Bannockburn Police Department and the Associate Dean of Students.

#### Responsible Administrators

These administrators are charged with primary responsibility of this process in collaborative partnership with other relevant departments and law enforcement agency: Safety and Security Manager, Associate Dean of Students. The Missing Persons Policy is also contained in the Trinity College and Trinity Evangelical Divinity School handbooks.

### **Tobacco, Drug and Alcohol Policy**

In compliance with the requirements of the federal Drug-Free Workplace Act of 1988 and the federal Drug-Free Schools and Communities Act Amendments of 1989, the University is committed to providing students and employees with a drug-free environment for both work and study. All members of the University are encouraged to be actively involved in the prevention of alcohol and other drug abuse. Prevention, education, and early intervention programs are available, along with counseling and referrals to appropriate mental health and medical services. Trinity International University is a smoke free and drug-free campus. Possession or consumption of alcohol, tobacco, or any illegal drug is not permitted. Trinity College students, regardless of age, are not permitted, under any circumstances, to purchase, possess, consume, or distribute alcoholic beverages or tobacco products of any kind on or off campus. Nonalcoholic beer and other drinks containing a percentage of alcohol are also prohibited. Substance abuse of any kind, including prescription medication, is prohibited. Individuals may be subject to having their breath smelled or tested by a Breathalyzer exam given by a staff member. Students may also be asked to undergo drug or alcohol testing available at Advocate Condell Medical Center. Any student refusing to submit to any of these tests will be held in violation of our standards.

*Any student who is involved in the purchase of illegal drugs or alcohol for a minor, or provides an off campus location for a party where alcohol is available to a minor is subject to immediate dismissal from the College.*

Students receive regular drug and alcohol prevention education. Counseling services for drug and substance abuse are available through Trinity's Counseling Center located in Owens Hall. Along with individual counseling for drug or substance abuse, the Counseling Center will schedule forums as needed to address issues pertinent to the Trinity student body at large. Information regarding off-campus substance abuse, counseling service, and rehabilitation programs can be obtained at the Counseling Center or at the Health Services Office information rack. Trinity reserves the right to report instances of illicit drug use and alcohol possession or use to the proper authorities. This policy will be reviewed annually and updated as necessary by Student Life and Human Resources and a bi-annual report has been created and published to insure program compliance and effectiveness. For further details on TIU's Drug and Alcohol Prevention Policy as well as health risks, counseling options and sanctions see Appendix "A".

### **Preparation of the Annual Crime and Fire Report**

The Jean Clery Act requires all higher education institutions to keep and disclose information about crime on, and directly adjacent to their campus. This data is collected from surrounding law enforcement agencies, Campus Security Authority's and student discipline referrals. The Annual Security and Fire Safety compliance document link is emailed to all faculty, staff and students on their (tiu.edu) email address as soon as the report is available prior to October 1<sup>st</sup> of each calendar year. It is also available on the TIU website at <https://www.tiu.edu/crime-statistics/>. This report is also made available to prospective students through the Admissions office, and to potential employees through Human Resources. If you would like to receive a paper copy of the combined Annual Security and Fire Safety Report which contains this information, you can stop Security Services at 2065 Half Day Road Bannockburn IL 60015 or you can request that a copy be mailed to you by calling (847) 317-7126.

The website and report contain information regarding campus security and personal safety including topics such as: crime prevention, fire safety, university police law enforcement authority, crime reporting policies, disciplinary procedures and other matters of importance related to security and safety on campus. They also contain information about crime statistics for the three previous calendar years concerning reported crimes that occurred on campus; in certain off-campus buildings or property owned or controlled by TIU; and on public property within, or immediately adjacent to

and accessible from the campus. In addition, Student Life in collaboration with Security Services collect, review, evaluate, report, and publish annual crime statistics. Prior to the release of the ASR, the report will be reviewed by an interdepartmental committee appointed by the Vice President of Student Life to ensure complete compliance. In very limited circumstances Trinity may remove reports of crimes that have been “unfounded” and will disclose this in the annual security report in the number of “unfounded” crimes. This will only be done when the complainant voluntarily comes forward and withdraws the complaint in writing stating that the accusation was false. This will then be reviewed with local law enforcement, and after evaluation all the evidence involved, a final determination will be made whether to find the original criminal complaint “unfounded”.

### **Annual Fire Safety Report**

TIU collects fire statistics, and is combined into one document as the Annual Security and Fire Safety Report. The Safety and Security Manager maintains a log of fire statistics. The Annual Fire Safety Report is published annually by October 1<sup>st</sup> and contains three years of fire statistics in accordance with (HEOA). This is the 2019 Annual Fire Safety Report which contains the statistics for calendar years 2016-2018. Per TIU Policy P-724 a combination “Bannockburn Campus Daily Fire and Crime Log” is kept and can be viewed at:

<https://www.tiu.edu/daily-fire-and-crime-log/>

The Fire Log includes:

- The date the fire was reported
- The nature of the fire
- The date and time of the fire
- The general location of the fire.

To minimize the potential for fires, TIU prohibits open burning and the use of combustible decorations at all times. Open flames are not permitted in the residence halls except for birthday cake candles with the RA’s permission. Open burning as defined by the University is any open/exposed flame or combustion that produces heat, light or smoke, and has the potential to cause a fire. Examples of open burning are, but not limited to, candles, incense, bonfires, campfires (except at the designated fire pit on the south end of Frazier Field with approval). All decorations and ornaments must be of fire-resistant or non-combustible material, U.L. rated and approved for use. They shall not be hung or posted on any fire protection equipment (fire extinguishers, sprinkler heads and piping, smoke detectors, fire alarm pull

boxes etc.), on or near exits, on or near exit or emergency lights, on or near any other protective or operating feature provided by the University, or in any manner that could present a fall or trip hazard, or impede egress. Removal of all decorations, ornaments and displays are required immediately after the event or prior to the University's annual Christmas closure. It is the policy of the University and local Fire Department that only artificial Christmas trees will be used and shall be of fire-retardant or non-combustible material. Indoor trees must be placed out of the way of traffic, do not block doorways, exits, exit signs or any of the fire protection equipment (fire extinguishers, sprinkler heads and piping, fire alarm pull boxes, smoke detectors, etc.), or placed in any manner that could present a fall or trip hazard, or impede egress. To further minimize the potential for fires at TIU, it is the policy of TIU to prohibit the use of the following items in any University dormitory room:

- Portable space heaters (unless issued by Facility Services)
- Products used for cooking/warming purposes
- Any open flame device or object including candles
- Incense sticks and related accessories
- Hot plates, slow cookers, deep fryers, electric skillets, electric woks, griddles, sandwich makers/grills and other similar type products (for cooking/warming purposes)\*
- Toaster ovens (for cooking/warming purposes)
- Flammable/combustible liquids (for recreational/personal use)
- Fireworks, firecrackers, rockets, flares, sparklers and other devices
- Halogen lamps

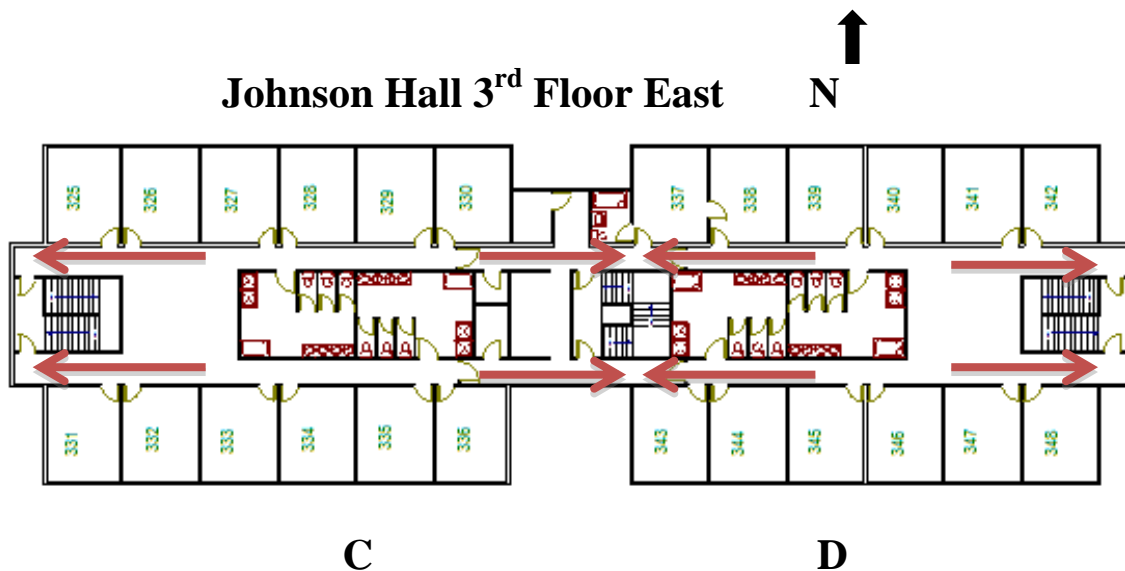
\*Slow cookers, griddles, sandwich makers, toasters do not apply to dormitories equipped with a kitchen as long as these items are used and stored in the kitchen area or Owens Hall.

All campus buildings are equipped with smoke and/or heat detector fire protection systems. Additionally, all dormitories and various other building on campus are equipped with complete fire sprinkler systems. These buildings are listed in the Annual Fire Statics below. Both systems are monitored by the Deerfield-Bannockburn Fire Protection District and are inspected annually by Fox Valley Fire and Safety. Furthermore, all 33 buildings on the Bannockburn Campus are inspected annually by the local Fire Inspector to ensure compliance with all applicable standards of the National Fire Protection Association (NFPA), the Life Safety Code and local building codes. These building are also inspected regularly by the Safety and Security Manager to ensure continued compliance.

## Procedures for Students and Employees to Follow in Case of Fire:

All students and staff are required to immediately exit the building in the event of a fire or the activation of the horns and strobes from the fire alarm detection system and proceed to the designated meeting area outside the building according to the buildings posted evacuation map. Every student room has an emergency evacuation map installed on the inside of the front door to direct occupants to primary and secondary exits.

For Example:



*In the event of a fire or evacuation, proceed to the South lawn area near Madsen Hall away from the building. Primary **tornado shelters** are in bathrooms on first floor.*

Should you be in a building when a fire is present or an alarm is activated, take the following actions:

- Evacuate IMMEDIATELY in a calm, orderly manner closing doors behind you and activating a fire pull station on your way out of the building if the alarm has not sounded.
- Assist those with disabilities in exiting the building and ensure, to the extent possible, that other occupants know to evacuate.
- After evacuating the building, proceed to the evacuation assembly area for that particular building. Supervisors, faculty and resident assistants will take a head count at the evacuation area and notify the Fire Department if anyone is unaccounted for. Be prepared to move to



another location if the evacuation assembly area is deemed to be too close to the building.

- Help keep roads, fire lanes, hydrants and walkways clear for emergency vehicles and crews.
- If you become trapped in a building during a fire, stay near the floor where the air will be less toxic. Call on your phone or shout for help at regular intervals to alert emergency rescue crews of your location.
- Remain calm and do not panic.

A person's first action should be to evacuate the building. If a fire is small and appears controllable, use a nearby fire extinguisher to combat the fire. All fires are to be reported to local fire department by dialing 911 (9-911 from a campus phone) no matter the size of the fire or if has been extinguished. Once you are in a safe area, additionally contact one of the following:

- Campus Safety and Security (847) 317-6400
- Immediate Supervisor
- Resident Director or Assistant

Additional information on fire emergency procedures is located in the Emergency Action Plan located in MyTIU under the Emergency Info tab [https://my.tiu.edu/ICS/Emergency\\_Info.jnz](https://my.tiu.edu/ICS/Emergency_Info.jnz)

Fire evacuation drills will be held twice annually, and disciplinary action may be imposed on anyone not evacuating the building during an alarm or anyone misusing a fire extinguisher. The current fire department fee of \$300 may also be charged to the person responsible for tampering with, discharging, or removing fire alarms, fire extinguishers, exit signs, or other safety equipment and activating false alarms. This includes abuse or misuse of microwave ovens (e.g., burnt popcorn setting off alarms) and will result in the loss of this privilege. Cooking is only permitted in designated kitchens.

The Smoke-free Illinois Act prohibits smoking in virtually all public places and workplaces, including offices, theaters, museums, libraries, educational institutions, schools, commercial establishments, enclosed shopping centers and retail stores, restaurants, bars, private clubs and gaming facilities. Illinois has taken this important step to protect its residents, workers and visitors from the harmful and hazardous effects of secondhand smoke. (Effective January 1, 2008) With this, and fire safety in mind, smoking is prohibited on all areas of campus grounds, and in all educational, administrative and residential buildings

## **Grills**

Charcoal or gas grills may not be used by college students on decks, patios, or in courtyards. Grills may be used if they are at least twenty-five feet from any buildings. Under no circumstances should hot charcoal be dumped into any trash receptacle.

## **Annual Emergency Evacuation Drills**

Security Services in collaboration with the Deerfield-Bannockburn Fire Department conduct 2 fire/evacuation drills per year. The drill will occur toward the beginning of each semester. These drills will take place in all dormitories, apartments and administrative buildings. The University requires complete evacuation of buildings to a prearranged outside assembly area during a fire alarm. A severe weather and a campus wide lockdown /protect in place drill are also conducted at various times during the school year. Drills may be announced or unannounced as determined by Student Life. After Action Reports are prepared by Security Services after each drill to determine effectiveness and includes suggestions for improvements. These procedures are updated annually and can be found in the Emergency Action Plan located on the desktop of MyTIU under the Emergency Info tab.

## **Fire Prevention Programs**

Per TIU Policy P-726 Fire Prevention Programs will include the following strategies:

- Orientation sessions for new students and employees designed to educate in Fire Prevention and Response
- Educational efforts for students and employees (both new and current)
  - Fire Extinguisher Training
  - Fire Safety
  - Orientation on the Emergency Action Plan and evacuation procedures
- Professional Residence Life training to respond and assist students in crisis situations and protocols for emergency response that include live fire pan fire extinguisher use.

- Fire Safety Day with the local Fire Marshal
- Written materials posted or distributed in prominent locations on campus

### **Future Improvements**

Fire alarm systems are evaluated on an ongoing basis and are updated or repaired as necessary. A fire alarm panel replacement list has been created and panels will be replaced based on age and performance. Additionally, all alarm systems are made ADA compliant as necessary.

## 2017 Fire Report

BUILDING	TOTAL FIRES	FIRE NUMBER	FIRE RELATED INJURIES REQUIRING TREATMENT AT A MEDICAL FACILITY	FIRE RELATED DEATHS	PROPERTY DAMAGE FROM FIRE	CAUSE OF FIRE	FULL SPRINKLER SYSTEM*
Apt A	0	0	N/A	N/A	N/A	N/A	NO
Apt B	1	1	0	0	\$10,000	Electrical	NO
Apt C	0	0	N/A	N/A	N/A	N/A	NO
Apt D	0	0	N/A	N/A	N/A	N/A	NO
Apt E	0	0	N/A	N/A	N/A	N/A	NO
Apt F	0	0	N/A	N/A	N/A	N/A	NO
Carlson Hall	0	0	N/A	N/A	N/A	N/A	YES
Gundersen Apts	0	0	N/A	N/A	N/A	N/A	NO
Johnson Hall	0	0	N/A	N/A	N/A	N/A	YES
Ludwigson Apts	0	0	N/A	N/A	N/A	N/A	YES
Lee Apt	0	0	N/A	N/A	N/A	N/A	YES
Madsen Hall	0	0	N/A	N/A	N/A	N/A	YES
North Apts	0	0	N/A	N/A	N/A	N/A	NO
Owens Hall	0	0	N/A	N/A	N/A	N/A	YES
South Apts	0	0	N/A	N/A	N/A	N/A	NO
Trinty Hall	0	0	N/A	N/A	N/A	N/A	YES
Quad 1	0	0	N/A	N/A	N/A	N/A	NO
Quad 2	0	0	N/A	N/A	N/A	N/A	NO
Quad 3	0	0	N/A	N/A	N/A	N/A	NO
Quad 4	0	0	N/A	N/A	N/A	N/A	NO

\*Full Sprinkler system is defined as having sprinklers in both the common areas and individual rooms.

## 2018 Fire Report

BUILDING	TOTAL FIRES	FIRE NUMBER	FIRE RELATED INJURIES REQUIRING TREATMENT AT A MEDICAL FACILITY	FIRE RELATED DEATHS	PROPERTY DAMAGE FROM FIRE	CAUSE OF FIRE	FULL SPRINKLER SYSTEM*
Apt A	0	0	N/A	N/A	N/A	N/A	NO
Apt B	0	0	0	0	N/A	N/A	NO
Apt C	0	0	N/A	N/A	N/A	N/A	NO
Apt D	0	0	N/A	N/A	N/A	N/A	NO
Apt E	0	0	N/A	N/A	N/A	N/A	NO
Apt F	0	0	N/A	N/A	N/A	N/A	NO
Carlson Hall	0	0	N/A	N/A	N/A	N/A	YES
Gundersen Apts	0	0	N/A	N/A	N/A	N/A	NO
Johnson Hall	0	0	N/A	N/A	N/A	N/A	YES
Ludwigson Apts	0	0	N/A	N/A	N/A	N/A	YES
Lee Apt	0	0	N/A	N/A	N/A	N/A	YES
Madsen Hall	0	0	N/A	N/A	N/A	N/A	YES
North Apts	0	0	N/A	N/A	N/A	N/A	NO
Owens Hall	0	0	N/A	N/A	N/A	N/A	YES
South Apts	0	0	N/A	N/A	N/A	N/A	NO
Trinty Hall	0	0	N/A	N/A	N/A	N/A	YES
Quad 1	0	0	N/A	N/A	N/A	N/A	NO
Quad 2	0	0	N/A	N/A	N/A	N/A	NO
Quad 3	0	0	N/A	N/A	N/A	N/A	NO
Quad 4	0	0	N/A	N/A	N/A	N/A	NO

\*Full Sprinkler system is defined as having sprinklers in both the common areas and individual rooms.

## 2019 Fire Report

BUILDING	TOTAL FIRES	FIRE NUMBER	FIRE RELATED INJURIES REQUIRING TREATMENT AT A MEDICAL FACILITY	FIRE RELATED DEATHS	PROPERTY DAMAGE FROM FIRE	CAUSE OF FIRE	FULL SPRINKLER SYSTEM*
Apt A	0	0	N/A	N/A	N/A	N/A	NO
Apt B	0	0	0	0	N/A	N/A	NO
Apt C	0	0	N/A	N/A	N/A	N/A	NO
Apt D	0	0	N/A	N/A	N/A	N/A	NO
Apt E	0	0	N/A	N/A	N/A	N/A	NO
Apt F	0	0	N/A	N/A	N/A	N/A	NO
Carlson Hall	0	0	N/A	N/A	N/A	N/A	YES
Gundersen Apts	0	0	N/A	N/A	N/A	N/A	NO
Johnson Hall	0	0	N/A	N/A	N/A	N/A	YES
Ludwigson Apts	0	0	N/A	N/A	N/A	N/A	YES
Lee Apt	0	0	N/A	N/A	N/A	N/A	YES
Madsen Hall	0	0	N/A	N/A	N/A	N/A	YES
North Apts	0	0	N/A	N/A	N/A	N/A	NO
Owens Hall	0	0	N/A	N/A	N/A	N/A	YES
South Apts	0	0	N/A	N/A	N/A	N/A	NO
Trinty Hall	0	0	N/A	N/A	N/A	N/A	YES
Quad 1	0	0	N/A	N/A	N/A	N/A	NO
Quad 2	0	0	N/A	N/A	N/A	N/A	NO
Quad 3	0	0	N/A	N/A	N/A	N/A	NO
Quad 4	0	0	N/A	N/A	N/A	N/A	NO

\*Full Sprinkler system is defined as having sprinklers in both the common areas and individual rooms.

## Fire Protection Systems

Housing Unit	Alarm Monitored By Fire Dept.	Smoke/Heat Detection	Fire Extinguishers	Evacuation Plan and Placards	Number of evacuation (fire) drills per year	Local battery smoke detectors	Building with full sprinkler system*
Apt A	YES	YES	YES	YES	2	YES	NO
Apt B	YES	YES	YES	YES	2	YES	NO
Apt C	YES	YES	YES	YES	2	YES	NO
Apt D	YES	YES	YES	YES	2	YES	NO
Apt E	YES	YES	YES	YES	2	YES	NO
Apt F	YES	YES	YES	YES	2	YES	NO
Carlson Hall	YES	YES	YES	YES	2	YES	YES
Gundersen Apts	YES	YES	YES	YES	2	YES	NO
Johnson Hall	YES	YES	YES	YES	2	NO	YES
Ludwigson Apts	YES	YES	YES	YES	2	YES	YES
Lee Apt	YES	YES	YES	YES	2	YES	YES
Madsen Hall+	YES	YES	YES	YES	2	YES	YES
North Apts	YES	YES	YES	YES	2	YES	NO
Owens Hall	YES	YES	YES	YES	2	YES	YES
South Apts	YES	YES	YES	YES	2	YES	NO
Trinty Hall	YES	YES	YES	YES	2	NO	YES
Quad 1	YES	YES	YES	YES	2	YES	NO
Quad 2	YES	YES	YES	YES	2	YES	NO
Quad 3	YES	YES	YES	YES	2	YES	NO
Quad 4	YES	YES	YES	YES	2	YES	NO

\*Full Sprinkler system is defined as having sprinklers in both the common areas and individual rooms.

+ Madsen Hall 4 corner Apartments do not contain sprinklers.

## **Clery Report Geography Classifications**

### **On Campus**

Any building or property owned or controlled by an institution within the same reasonably contiguous geographic area and used by the institution in direct support of, or in a manner related to, the institution's educational purposes, including residence halls.

### **On Campus Student Housing Facilities**

Of those criminal offenses reported to have occurred on campus, only those occurring in student housing facilities.

### **Non Campus**

Any building or property owned or controlled by a student organization that is officially recognized by the institution; or Any building or property owned or controlled by an institution that is used in direct support of, or in relation to, the institution's educational purposes, is frequently used by students, and is not within the same reasonably contiguous geographic area of the institution.

### **Public Property**

All public property, including thoroughfares, streets, sidewalks, and parking facilities, that is within the campus, or immediately adjacent to and accessible from the campus, but are not deemed part of the campus

## **Crime Definitions**

**ARSON:** Any willful or malicious burning or attempt to burn, with or without intent to defraud, a dwelling house, public building, motor vehicle or aircraft, personal property of another, etc.

**CRIMINAL HOMICIDE -- Manslaughter by Negligence:** The killing of another person through gross negligence.



**CRIMINAL HOMICIDE -- Murder and Non-negligent Manslaughter:** The willful (non-negligent) killing of one human being by another.

**SEX OFFENSES -- FORCIBLE:** Any sexual act directed against another person, forcibly and/or against that person's will; or not forcibly or against the person's will where the victim is incapable of giving consent.

**SEX OFFENSES -- NON-FORCIBLE:** Any unlawful, non-forcible sexual intercourse, such as incest or statutory rape.

**ROBBERY:** The taking or attempting to take anything from value of the care, custody or control of a person or persons by force or threat of force or violence and/or by putting the victim in fear.

**AGGRAVATED ASSAULT:** An unlawful attack by one person upon another for the purpose of inflicting severe or aggravated bodily injury. This type of assault usually is accompanied by the use of a weapon or by means likely to produce death or great bodily harm. It is not necessary that injury result from an aggravated assault when a gun, knife or other weapons is used which could or probably would result in a serious potential injury if the crime were successfully completed.

**BURGLARY:** The unlawful entry of a structure to commit a felony or a theft. For reporting purposes this definition includes: unlawful entry with attempt to commit a larceny or a felony; breaking and entering with intent to commit a larceny; housebreaking, safecracking; and all attempts to commit any of the aforementioned.

**MOTOR VEHICLE THEFT:** The theft or attempted theft of a motor vehicle. (Classify as motor vehicle theft all cases where persons not having lawful access take automobiles, even though the vehicles are later abandoned)

**DOMESTIC VIOLENCE:** is defined as a pattern of abusive behavior that is used by an intimate partner to gain or maintain power and control over the other intimate partner. Domestic violence can be physical, sexual, emotional, economic, or psychological actions or threats of actions that influence another person. This includes any behaviors that intimidate, manipulate, humiliate, isolate, frighten, terrorize, coerce, threaten, blame, hurt, injure, or wound someone.

**DATING VIOLENCE:** is defined as violence committed by a person who is or has been in a social relationship of a romantic or intimate nature with the victim; and where the existence of such a relationship shall be determined based on a consideration of the following factors:

- The length of the relationship
- The type of relationship
- The frequency of interaction between the persons involved in the relationship

**STALKING:** is defined as a pattern of repeated and unwanted attention, harassment, contact, or any other course of conduct directed at a specific person that would cause a reasonable person to feel fear.

**WEAPON LAW VIOLATIONS:** The violation of laws or ordinances dealing with weapon offenses, regulatory in nature, such as: manufacture, sale, or possession of deadly weapons; carrying deadly weapons, concealed or openly; furnishing deadly weapons to minors; aliens possessing deadly weapons; all attempts to commit any of the aforementioned.

**DRUG ABUSE VIOLATIONS:** Violations of state and local laws relating to the unlawful possession, sale, use, growing, manufacturing, and making of narcotic drugs. The relevant substances include: opium or cocaine and their derivatives (morphine, heroin, codeine); marijuana; synthetic narcotics (Demerol, methadone); and dangerous non-narcotic drugs (Barbiturates, Benzedrine).

**LIQUOR LAW VIOLATIONS:** The violation of laws or ordinance prohibiting: the manufacture, sale, transporting, furnishing, possessing of intoxicating liquor; maintaining unlawful drinking places; bootlegging; operating a still; furnishing liquor to minor or intemperate person, underage drinking, using vehicle for illegal transportation of liquor; drinking on a train or public conveyance, all attempts to commit any of the aforementioned. (Drunkenness and driving under the influence are not included in this definition.)

## **HATE CRIMES**

Any of the above listed crimes, plus Larceny-Theft, Simple Assault, Intimidation, and Destruction/Damage/Vandalism of property in which the victim is intentionally selected based on actual or perceived race, gender, religion, sexual preference, ethnicity or disability of the victim that are reported shall be classified as hate crimes. These statistics will be classified in both the general statistics and in a special area covering hate crimes.

Crime Definitions from the Hate Crime Data Collection Guidelines and Training Manual from the FBI's UCR Program:

### **LARCENY-THEFT (Except Motor Vehicle Theft)**

The unlawful taking, carrying, leading, or riding away of property from the possession or constructive possession of another. Attempted larcenies are included. Embezzlement, confidence games, forgery, worthless checks, etc., are excluded.

### **SIMPLE ASSAULT**

An unlawful physical attack by one person upon another where neither the offender displays a weapon, nor the victim suffers obvious severe or aggravated bodily injury involving apparent broken bones, loss of teeth, possible internal injury, severe laceration, or loss of consciousness.

### **INTIMIDATION**

To unlawfully place another person in reasonable fear of bodily harm through the use of threatening words and/or other conduct, but without displaying a weapon or subjecting the victim to actual physical attack.

### **DESTRUCTION/DAMAGE/VANDALISM OF PROPERTY**

To willfully or maliciously destroy, damage, deface, or otherwise injure real or personal property without the consent of the owner or the person having custody or control of it.

# Release of Statistical Data in Compliance with this Act

## Trinity International University Clery Crime Statistics

### Trinity Bannockburn On Campus

	2017		2018		2019	
Offense Type						
Murder	0		0		0	
Manslaughter	0		0		0	
Forcible Sex Offenses	2		0		0	
Non-Forcible Sex Offenses	0		0		0	
Robbery	0		0		0	
Aggravated Assault	0		0		0	
Burglary	1		6		4	
Arson	0		0		0	
Motor Vehicle Theft	0		1		0	
Domestic Violence	0		1		1	
Dating Violence	0		1		0	
Stalking	0		1		0	
Unfounded	0		0		0	

\*3 burglaries were attributed to book keeping errors.

	2017		2018		2019	
Liquor Law Violations						
Arrest	0		0		0	
Referral	1		2		0	
Drug Law Violations						
Arrest	0		0		0	
Referral	0		1		0	
Weapons Law Violations						
Arrest	0		0		0	
Referral	0		0		0	

**Trinity International University  
Clery Crime Statistics**

**Trinity On-Campus Bannockburn Student Housing Facilities**

	2017		2018		2019	
Offense Type						
Murder	0		0		0	
Manslaughter	0		0		0	
Forcible Sex Offenses	2		0		0	
Non-Forcible Sex Offenses	0		0		0	
Robbery	0		0		0	
Aggravated Assault	0		0		0	
Burglary	1		6		4	
Arson	0		0		0	
Motor Vehicle Theft	0		1		0	
Domestic Violence	0		1		1	
Dating Violence	0		1		0	
Stalking	0		0		0	
Unfounded	0		0		0	

	2017		2018		2019	
Liquor Law Violations						
Arrest	0		0		0	
Referral	1		2		0	
Drug Law Violations						
Arrest	0		0		0	
Referral	0		1		0	
Weapons Law Violations						
Arrest	0		0		0	
Referral	0		0		0	

**Trinity International University  
Clery Crime Statistics**

**Trinity Bannockburn Public Property (Clery Geography)**

	2017	2018	2019
Offense Type			
Murder	0	0	0
Manslaughter	0	0	0
Forcible Sex Offenses	0	0	0
Non-Forcible Sex Offenses	0	0	0
Robbery	0	0	0
Aggravated Assault	0	0	0
Burglary	0	0	0
Arson	0	0	0
Motor Vehicle Theft	0	0	0
Domestic Violence	0	0	0
Dating Violence	0	0	0
Stalking	0	0	0
Unfounded	0	0	0

	2017	2018	2019
Liquor Law Violations			
Arrest	0	0	0
Referral	0	0	0
Drug Law Violations			
Arrest	2	0	0
Referral	0	0	0
Weapons Law Violations			
Arrest	0	0	0
Referral	0	0	0

**Trinity International University  
Clery Crime Statistics**

**Trinity Bannockburn Non-Campus Building or Property**

	2017		2018		2019	
Offense Type						
Murder	0		0		0	
Manslaughter	0		0		0	
Forcible Sex Offenses	0		0		0	
Non-Forcible Sex Offenses	0		0		0	
Robbery	0		0		0	
Aggravated Assault	0		0		0	
Burglary	0		0		0	
Arson	0		0		0	
Motor Vehicle Theft	0		0		0	
Domestic Violence	0				0	
Dating Violence	0		0		0	
Stalking	0		0		0	
Unfounded	0		0		1	

	2017		2018		2019	
Liquor Law Violations						
Arrest	0		0		0	
Referral	0		0		0	
Drug Law Violations						
Arrest	0		0		0	
Referral	0		0		0	
Weapons Law Violations						
Arrest	0		0		0	
Referral	0		0		0	

Hate Crimes-On Trinity Bannockburn Campus	2017	2018	2019
Offense Type			
Murder	0	0	0
Manslaughter	0	0	0
Forcible Sex Offenses	0	0	0
Non-Forcible Sex Offenses	0	0	0
Robbery	0	0	0
Aggravated Assault	0	0	0
Burglary	0	0	0
Arson	0	0	0
Motor Vehicle Theft	0	0	0
Hate Crimes (by prejudice)	0	0	0
Race	0	0	0
Gender	0	0	0
Religion	0	0	0
National Origin	0	0	0
Gender Identity	0	0	0
Ethnicity	0	0	0
Disability	0	0	0
Larceny-Theft	0	0	0
Simple assault	0	0	0
Intimidation	0	0	0
Destruction/Damage/Vandalism of property	0	0	0



Hate Crimes-In Trinity Bannockburn Student Housing	2017	2018	2019
Offense Type			
Murder	0	0	0
Manslaughter	0	0	0
Forcible Sex Offenses	0	0	0
Non-Forcible Sex Offenses	0	0	0
Robbery	0	0	0
Aggravated Assault	0	0	0
Burglary	0	0	0
Arson	0	0	0
Motor Vehicle Theft	0	0	0
Hate Crimes (by prejudice)	0	0	0
Race	0	0	0
Gender	0	0	0
Religion	0	0	0
Gender Identity	0	0	0
National Origin	0	0	0
Ethnicity	0	0	0
Disability	0	0	0
Larceny-Theft	0	0	0
Simple assault	0	0	0
Intimidation	0	0	0
Destruction/Damage/Vandalism of property	0	0	0

Hate Crimes- Trinity Bannockburn Non-Campus Building or Property	2017	2018	2019
Offense Type			
Murder	0	0	0
Manslaughter	0	0	0
Forcible Sex Offenses	0	0	0
Non-Forcible Sex Offenses	0	0	0
Robbery	0	0	0
Aggravated Assault	0	0	0
Burglary	0	0	0
Arson	0	0	0
Motor Vehicle Theft	0	0	0
Hate Crimes (by prejudice)	0	0	0
Race	0	0	0
Gender	0	0	0
Religion	0	0	0
Gender Identity	0	0	0
National Origin	0	0	0
Ethnicity	0	0	0
Disability	0	0	0
Larceny-Theft	0	0	0
Simple assault	0	0	0
Intimidation	0	0	0
Destruction/Damage/Vandalism of property	0	0	0

Hate Crimes- Trinity Bannockburn Public Property-Clery Geography	2017	2018	2019
Offense Type			
Murder	0	0	0
Manslaughter	0	0	0
Forcible Sex Offenses	0	0	0
Non-Forcible Sex Offenses	0	0	0
Robbery	0	0	0
Aggravated Assault	0	0	0
Burglary	0	0	0
Arson	0	0	0
Motor Vehicle Theft	0	0	0
Hate Crimes (by prejudice)	0	0	0
Race	0	0	0
Gender	0	0	0
Religion	0	0	0
Gender Identity	0	0	0
National Origin	0	0	0
Ethnicity	0	0	0
Disability	0	0	0
Larceny-Theft	0	0	0
Simple assault	0	0	0
Intimidation	0	0	0
Destruction/Damage/Vandalism of property	0	0	0

## CLERY GEOGRAPHY BANNOCKBURN CAMPUS



## Appendix “A”



### Drug and Alcohol Abuse Policy

In compliance with the requirements of the federal Drug-Free Workplace Act of 1988 and the federal Drug-Free Schools and Communities Act Amendments of 1989, the University is committed to providing students and employees with a drug-free environment for both work and study.

**Prohibition:** The University prohibits the unlawful possession, use or distribution of illicit drugs and alcohol by students and employees on its property or as part of any of its activities.

**Legal Sanctions:** Violations of this prohibition may be punishable under applicable local, state and federal laws.

**University Sanctions:** Violations of this prohibition will result in disciplinary action from the University. Sanctions may include educational intervention, mandated community service, suspension, expulsion, termination of employment and referral for prosecution.

**Health Risks:** Drug and alcohol use is an activity with inherent risk. Coordination, reaction time and judgment of the user have been proven to be affected by drug and alcohol usage, and this may pose a danger to the user and other members of the university community. There are known health risks resulting from the use of illicit drugs and/or alcohol. For example, the Surgeon General has warned that the consumption of alcohol during pregnancy may increase the risk of birth defects.

**Prevention:** For the stated reasons, all members of the University are encouraged to be actively involved in the prevention of alcohol and other drug abuse. Prevention and education programs are available, along with counseling and referrals to appropriate mental health and medical services. Initial consultations are available from the Counseling Center on campus.

From there, referrals to appropriate treatment options may be made as circumstances require.

The Counseling Center may be reached at [counsctr@tiu.edu](mailto:counsctr@tiu.edu) or 317.847.4067.

Review: The University will review the effectiveness and consistency of its programs through a Biennial Review.